

Information / Resources available to you

- An Overview of the Mentoring Scheme
- Mentors Guidelines
- Mentoring Aids
- Mentoring Scheme Contact Details
- NECC Leaflets
- Training Seminars
- Documents
- Mentoring Calendar
- Speeches, Stories, Talks & Toasts
- Obscure Ritual & Practices
- Supporting Documentation
- Kent Library & Museum
- Light Blues Mess

Objectives

- ✓ To establish a Mentoring Framework throughout the province that will be respected by our Lodges and our membership
- ✓ To support and respect each individual Lodges' wants and aspirations
- ✓ To provide our Lodges with regular information regarding the Mentoring Initiative
- ✓ To establish an identifiable support mechanism to our members, both new and existing, that can provide knowledge and / or direction on a personal basis when required
- ✓ To seek active participation from our members to ensure that the Mentoring Initiative Infrastructure accurately reflects the demographics of our membership
- ✓ To publish our achievements and findings through the collation and investigation of factual statistics

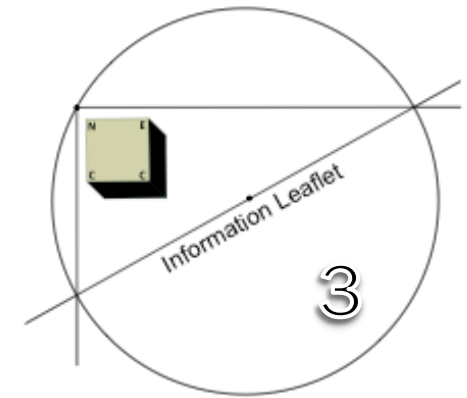
Mentoring Team

The Provincial Grand Mentor implements the Mentoring Scheme and is assisted by four Group Mentors who are each responsible for approximately 50 Lodges. Each Group Mentor has a team of Assistant Group Mentors to aid with the implementation of the Mentoring Scheme throughout the Province. The allocation of Lodges to each of the Group Mentors aligns with the Groups allocated to each of the Assistant Provincial Grand Masters.

Mentoring is not only the next key step in assisting the new members following on from the objectives of the Recruitment Initiative, but is also a key strategy for the existing membership in maintaining their focus, interest and enjoyment of the Craft.

Through the Mentoring Team framework, the team aims to assist the membership with:

- Their enjoyment of the Craft
- Their understanding of the Craft; and
- How they can communicate to others their experiences of the Craft



The Provincial Mentoring Team

www.westkentmasons.org.uk

www.westkentmentoring.org.uk



Group 1 Mentor – Lee Curtis

Group 1 = 42 + 02 Lodges

Dartford & Greenhithe = 4 Assistant Group Mentors

Wilmington = 2 Assistant Group Mentors

Dartford - 13, 299, 2980, 4266, 5819, 5865, 5873, 6206, 6336, 6417, 6668, 6868, 7480, 7558, 7742, 7849, 8179, 8219, 8710, 8866, 8914, 8967, 9020, **9062**, 9088, 9202, 9485, **9610**, 9802, 9899

Greenhithe - 2499, 5449

Wilmington - 1422, 1837, 2148, 5448, 7129, 8311, 8333, 8451, 8462, 8684, 8784, 8885

Group 2 Mentor – Neil Dale

Group 2 = 42 Lodges

Welling = 4 Assistant Group Mentors

Wrotham = 2 Assistant Group Mentors

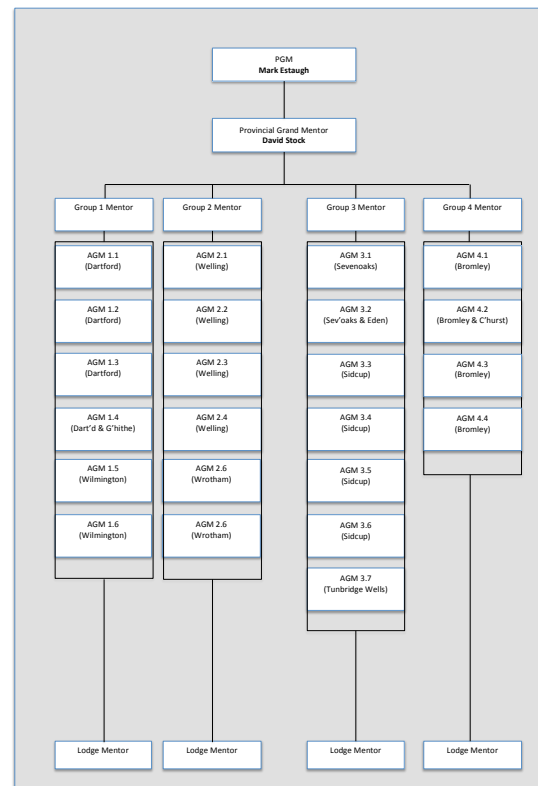
Welling – 615, 913, 1314, 1536, 1973, 2399, 3578, 3965, 4044, 4492, 5085, 5731, 6218, 6315, 6610, 6705, 6897, 7293, 7308, 7351, 7393, 7617, 7887, 7992, 8046, 8110, 8269, 8278, 8324, 8392, 8677, 9231

Wrotham - 5008, 5929, 6162, 6936, 7722, 8742, 9445, 9532, 9560, 9700

Mentoring Team Structure



Mentoring Organisational Chart



Issue 45 – 7th June 2019

Group 3 Mentor – Simon Reay

Group 3 = 46 + 02 Lodges

Sevenoaks & Edenbridge = 2 Assistant Group Mentors

Sidcup = 4 Assistant Group Mentors

Tunbridge Wells = 1 Assistant Group Mentors

Sevenoaks - 1223, 1414, 3601, 3947, 6405, 6932, 7475, **8593**, 8659, 8685, 8882, **9279**

Edenbridge – 7462

Sidcup - 829, 1692, 2530, 5614, 5826, 5842, 5963, 5976, 5977, 6161, 6285, 6416, 6552, 6753, 6834, 6875, 6978, 6996, 7238, 7379, 7589, 8045, 8398, 8552, 9164, 9195, 9411, 9792

Tunbridge Wells - 874, 1678, 2200, 4273, 5263, 7203, 9563

Group 4 Mentor – Roland White

Group 4 = 37 + 04 Lodges

Bromley & Chislehurst = 4 Assistant Group Mentors

Bromley - 1107, 1531, 2041, 2147, 2948, 4110, 4241, 4810, 4988, 5136, 5338, 5435, 5512, 5572, 5701, **5778**, 5882, 6283, 6404, 6548, 6882, 7048, 7049, 7492, 7939, 8128, 8299, 8409, **8565**, 8833, 8936, 8958, 9012, 9022, 9192, 9246, 9330, 9383, **9799**

Chislehurst - 3042, **8378**